

MultiTech Accessories

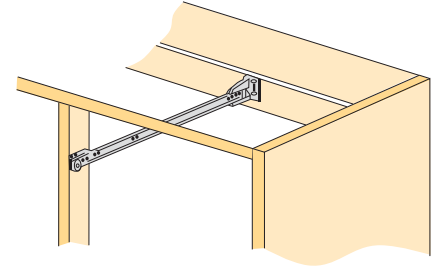
Rear Mounting Bracket for MultiTech



The rear mounting bracket is especially designed for face frame construction as well as applications not using a full center panel. Positive fit between slide and bracket eliminates "twist-out" between parts. Interference between bracket and drawer box impossible. Elongated slots provide both horizontal and vertical adjustment. Attachment can be by screw or staples.

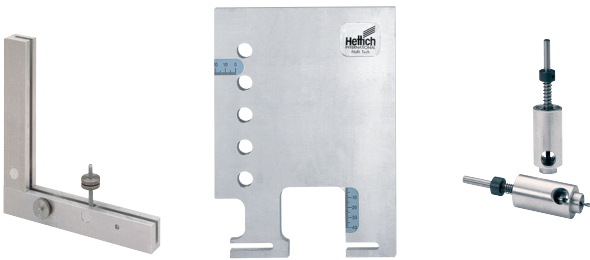
Min. support 30 mm, max. support 86 mm.

Article	Finish	Order no.	PU
Rear mounting bracket left	plastic	052 101	600
Rear mounting bracket right	plastic	052 102	600
Recommended screw no. 6			



Marking gauge Practica for MultiTech drawers/pot-and-pan drawer

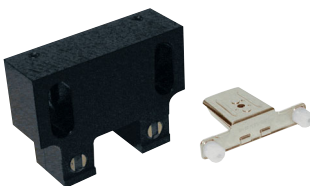
The MultiTech front panel gauge (universal angle stop and drilling template) makes it easy to drill holes in any required position for fixing the front panel to the drawer/pot-and-pan drawer.



Article	Order no.	PU
Practica universal angle stop	078 093	1
Article	Order no.	PU
Practica drilling template	079 637	1
Article	Order no.	PU
Sleeve drill \varnothing 10 mm	078 096	1
Spare drill \varnothing 10 mm	079 005	1

Insertion die for front connectors

for Blue Max mini and Blue Max 6/8/19



Article	Order no.	PU
Insertion die for MultiTech 54	079 566	1
MultiTech 86/118/150 and 214	040 129	1

Assembly jig

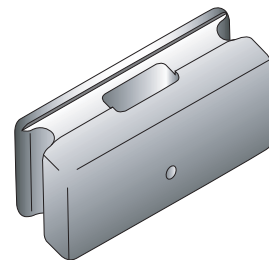
for simple, fast and precise assembly of MultiTech cabinet runners



Article	Finish	Order no.	PU
Assembly jig	blue	064 820	1

Mounting tool

for knock-in assembly of front connectors



Article	Order no.	PU
Mounting tool for MultiTech 54	079 564	1
MultiTech 86/118/150 and 214	040 133	1